

# TopBraid EDG User Group Meeting

October 29, 2020



# Agenda

- Release Planning Process:
  - how we decide on the new features and how you can contribute and influence these decisions
- Deep Dive into Data Import Options:
  - address some of the most commonly asked questions about loading data into EDG
- Q & A



**Robert Coyne**

CMO, VP of Prof. Services,  
and Co-founder  
robert@topquadrant.com

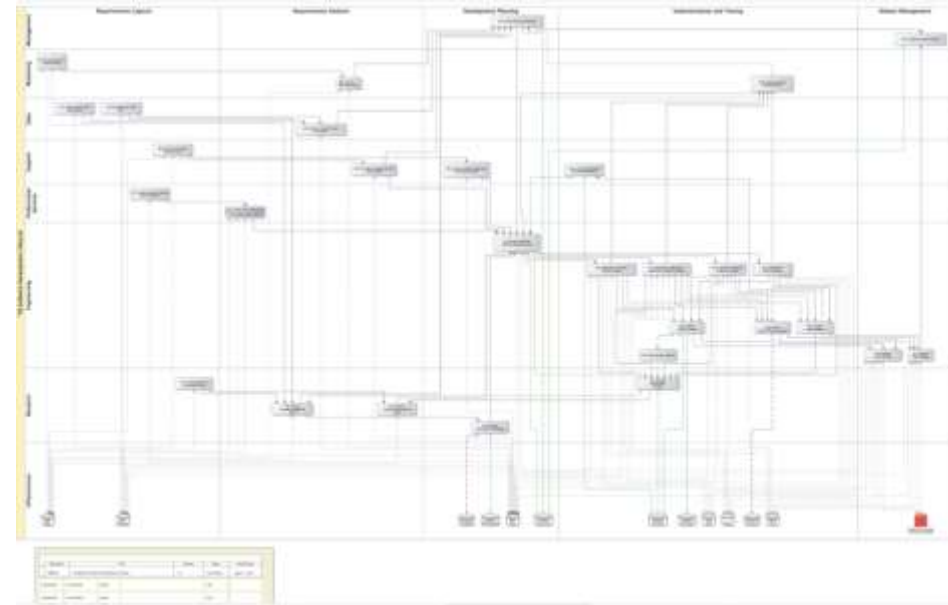


**Irene Polikoff**

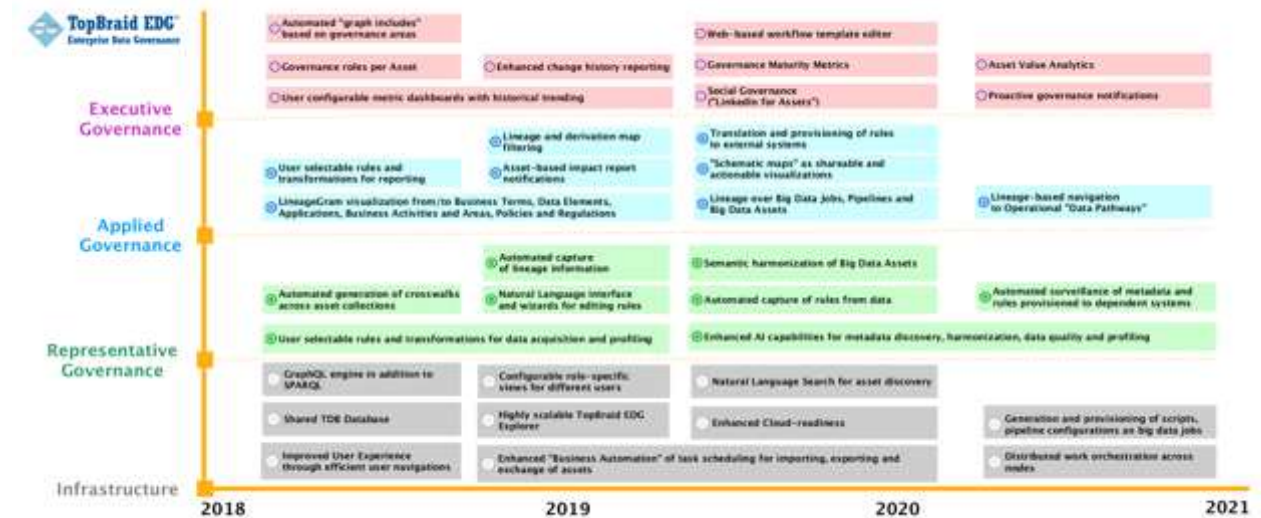
CEO and Co-founder  
irene@topquadrant.com

# TopBraid EDG Product Planning

## Software Development Lifecycle (SDLC)



## Roadmap Strategy and Planning



# TopBraid EDG Product Release LifeCycle

- New versions of TopBraid EDG are released biannually:
  - 2018: release of 6.0 and 6.1
  - 2019: release of 6.2 and 6.3
  - 2020: release of 6.3, 6.4, and will release 7.0-beta
  - 2021: will release 7.0 and 7.1
- Some capabilities will be delivered incrementally across multiple releases.

# TopQuadrant Product Release Lifecycle

- We proactively solicit input for what to include in the next release
- When the Release X.y beta is ready, we:
  - Conduct a webinar **What's New in Release X.y?** for all customers who wish to attend
  - Invite customers to download and test the beta, and provide feedback
- If we are retiring a feature, we:
  - Put a warning in the previous release that it will be deprecated in the next release
  - Indicate the feature(s) that it is replaced by, or what you can use instead

# TopQuadrant's SDLC: High-Level View

Management

Marketing

Sales

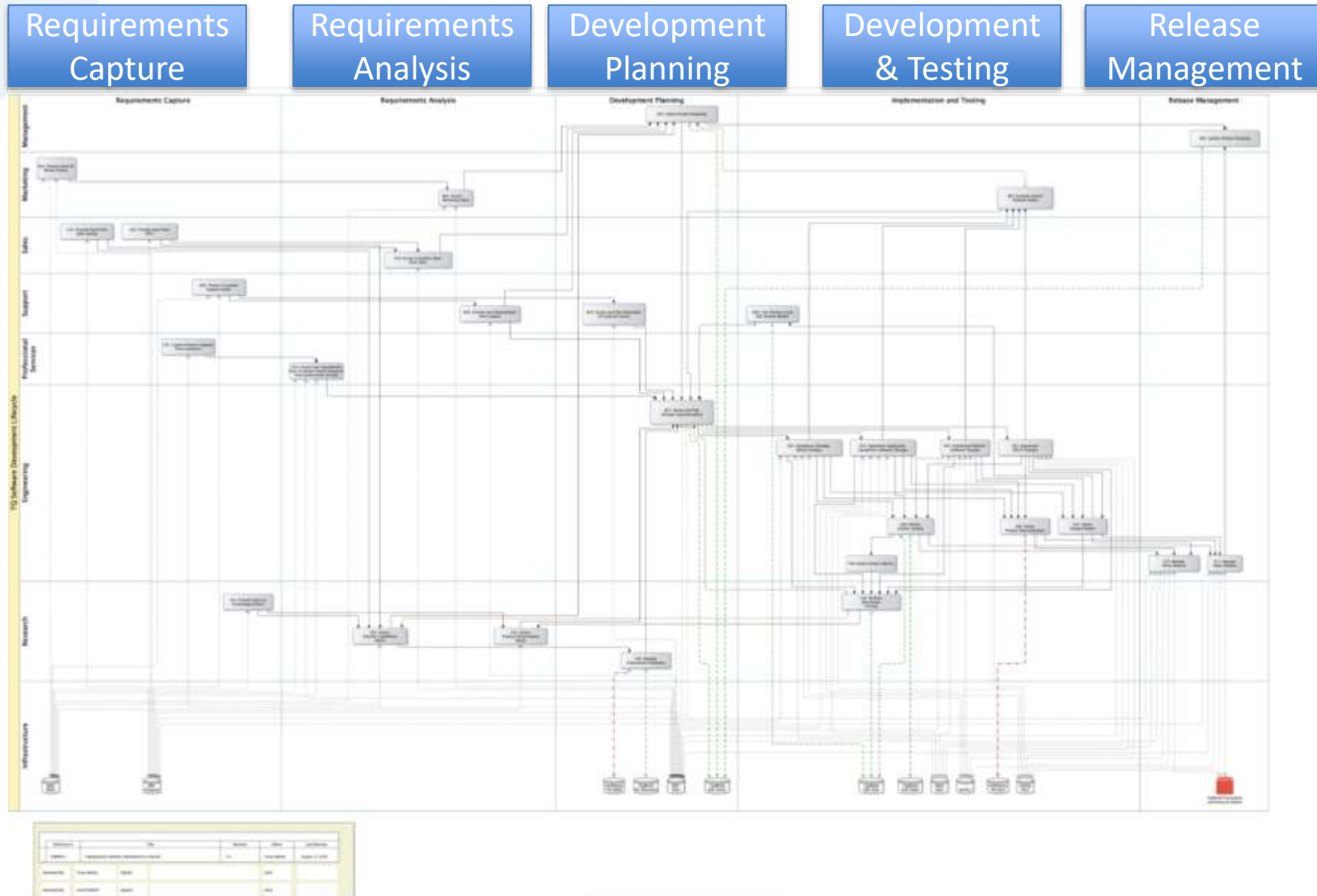
Support

Professional Services

Engineering

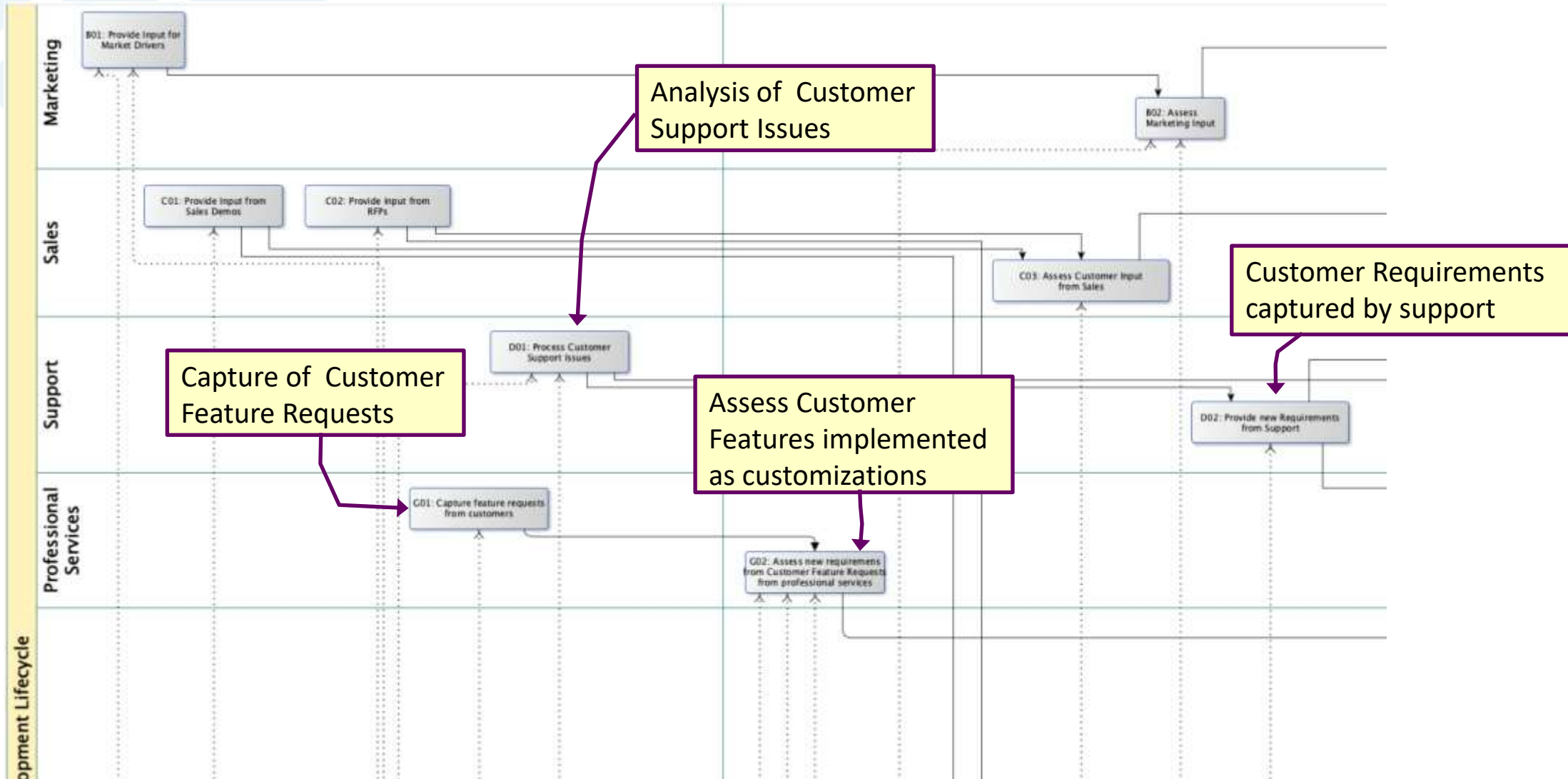
Research

Infrastructure

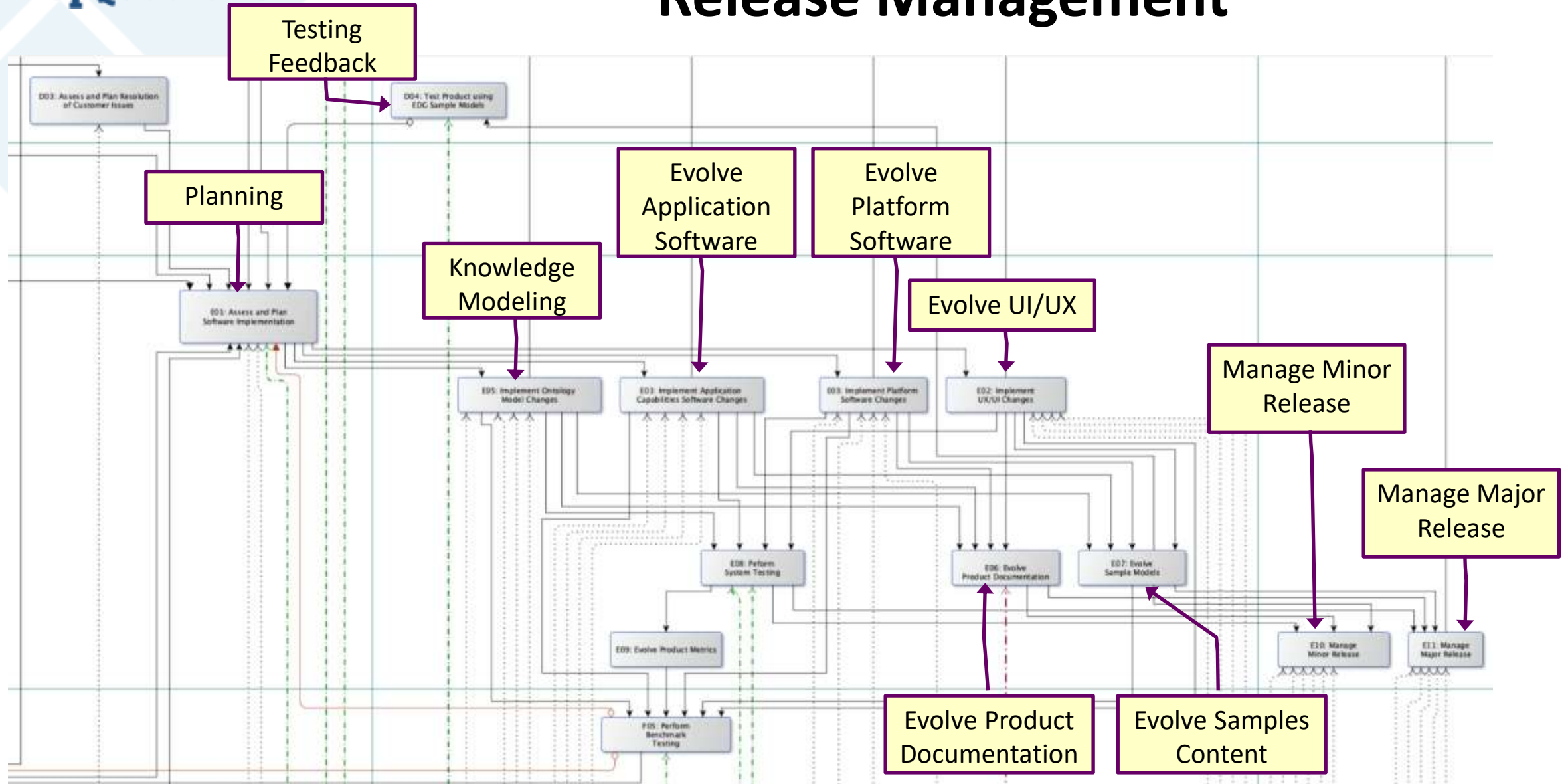


Item	Category	Value	Unit	Location
...	...	...	...	...
...	...	...	...	...
...	...	...	...	...

# TopQuadrant's SDLC: Requirements Capture



# TopQuadrant's SDLC: Development, Testing and Release Management





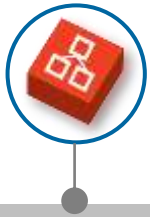
# TopQuadrant Product Roadmap

- We do not publish a TopBraid EDG Roadmap publicly
  - We share as much information as we can
  
- You can influence our roadmap
  - We have a process for that, as indicated in the Requirements solicitation and capture channels outlined on the previous slides
  
- Why is this needed?
  - The more information we can gather to motivate enhancements and new features and their relative priorities, the better!

# TopBraid EDG: Overview

*TopBraid EDG offers prebuilt models and features that support integrated governance over a complete range of information assets and governance needs, using enterprise knowledge graphs to capture semantics*

## TOPBRAID EDG - GOVERNANCE PACKAGES



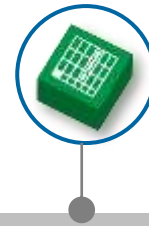
### Vocabulary Management

lets organizations create, connect and use taxonomies and ontologies



### Metadata Management

lets organizations govern technical metadata



### Reference Data Management

makes it easy to bring consistency and accuracy to the use of reference data across enterprise applications



### Business Glossaries

provides a simple starting place for a data governance initiative

## TOPBRAID EDG – ADD ON MODULES

**TopBraid Explorer** lets a broader community of data stakeholders explore information governed by TopBraid EDG

**Customer Defined Asset Collection Type** is an add-on module that can be added to any of the packages within TopBraid EDG.

**TopBraid Tagger and AutoClassifier** links controlled vocabulary terms to content. Content resources can be tagged manually or auto-tagged using Tagger's AutoClassifier capabilities.

**TopBraid Data Platform** provides high availability TopBraid servers for continuous operation of business functions by replicating data across a cluster of servers

# TopBraid EDG has many Capabilities – the Roadmap process is about setting priorities

- **Metadata and Data Ingestion:** From RDBMs, spreadsheets (CSV & Excel), XML, DDL, RSS feeds, SPARQL endpoints and other formats – with flexible mapping to EDG models.
- **Discovery, Profiling and Enrichment:** Profiling of data sources, auto-mapping of data elements to business terms, auto-mapping of crosswalks, automated tagging of content, business and data rules for validation and reasoning. Traceability across all asset types.
- **Governance:** Configurable workflows with virtual work-in-progress copies of changes for controlled review and approval. Custom defined subject areas, governance roles, configurable dashboards with metrics.
- **Search, Reporting and Visualization:** Parametric and faceted search –within and across asset collections. Lucene integration. Built-in reports as well as advanced query-building tools and reporting through graphical interfaces. Visual navigation.
- **Editing with Access Control and Audit Trail:** Different editor applications for different asset collection types, multi-lingual, cloning, merging, rich text support, batch edit operations for selected groups of assets, full audit history.
- **Collaboration:** Event notifications, tasks and comments (optional integration with JIRA).
- **Systems Integration:** Integrates with existing enterprise or information management systems via RESTful Web Services interfaces, APIs and query endpoints.
- **Enterprise-ready:** Easy customization of user interfaces and services, custom validation/inference rules. Scalable architecture offers choice of relational & RDF (graph) DB repositories w/ LDAP integration for access control. Cloud-ready.

# Prioritizing Where to Focus

1. Enriching the User Experience
2. Improvements to Importing and Exporting
3. Further improvements to Search
4. Advanced Workflows
5. Job Scheduling
6. Enhanced Backup and Restore
7. Further use of AI/ML/Rules for Discovery and Metrics
8. Socialization with knowledge-driven Collaboration
9. Cloud-ready Deployment
10. Authentication and Authorization

# TopBraid Roadmaps

## ■ TopBraid EDG 2020

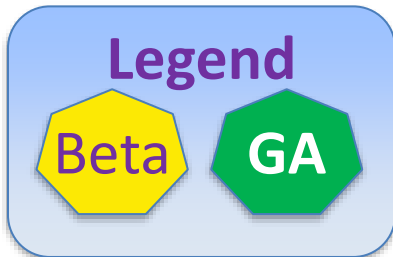
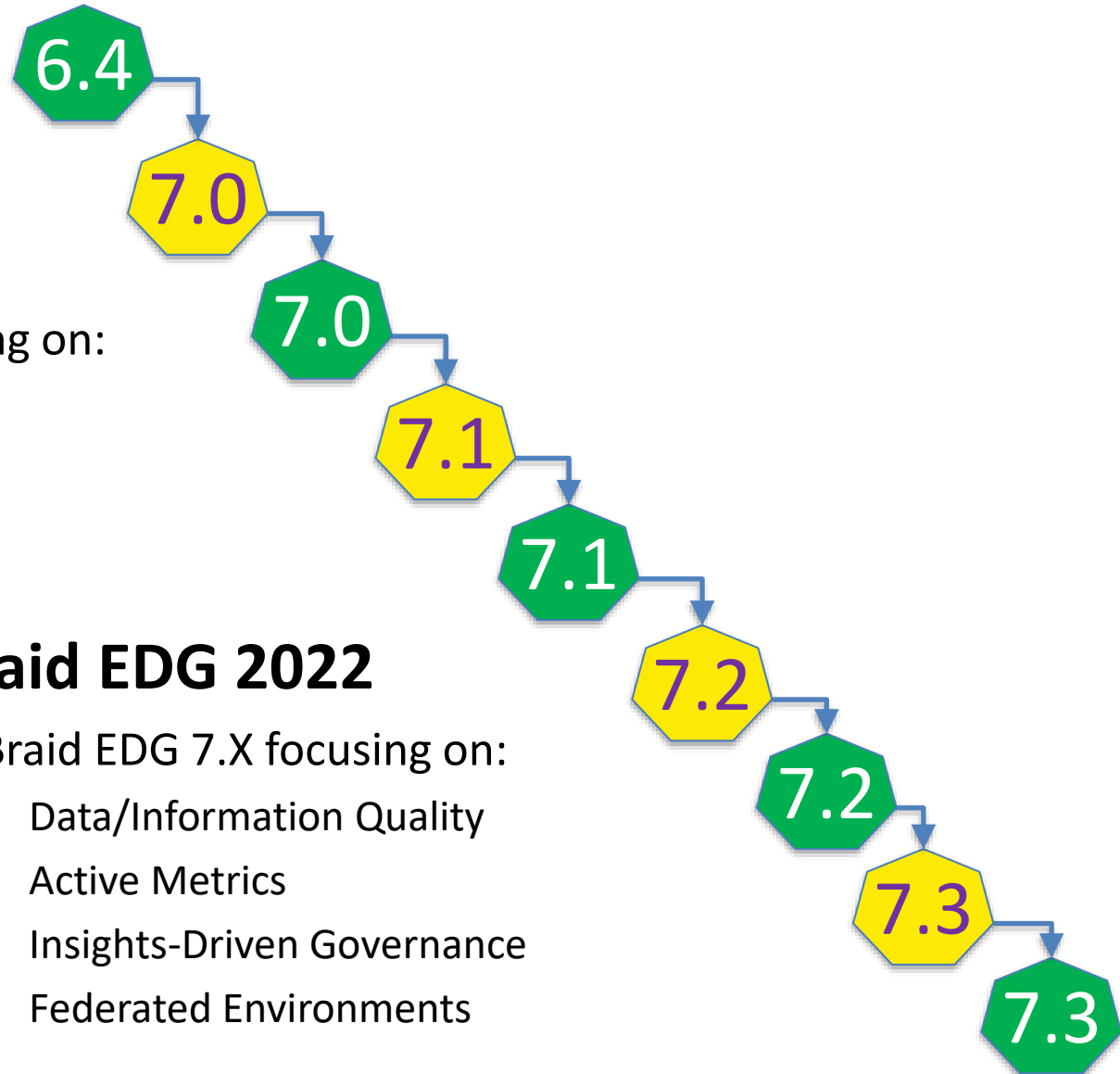
- TopBraid EDG 6.4
- TopBraid EDG 7.0 BETA

## ■ TopBraid EDG 2021

- TopBraid EDG 7.0 -7.1 focusing on:
  1. Cloud Deployment
  2. Performance
  3. Scripting
  4. Importing and Exporting

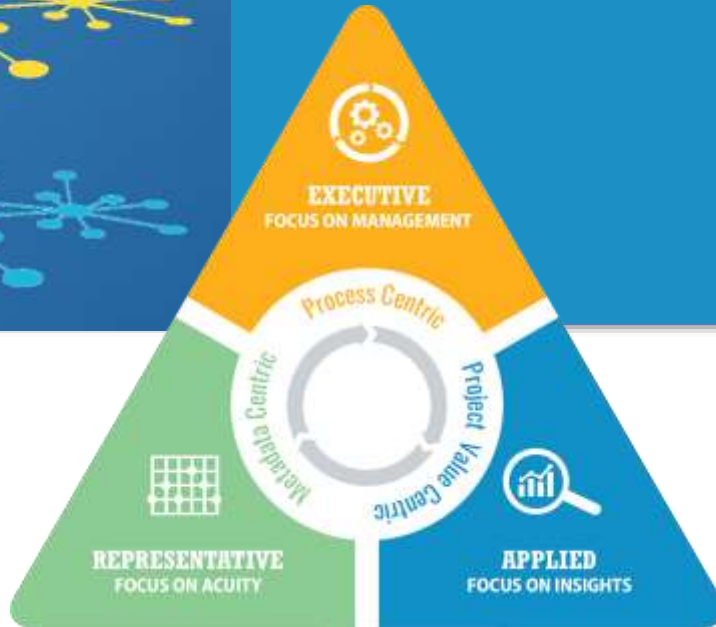
## ■ TopBraid EDG 2022

- TopBraid EDG 7.X focusing on:
  1. Data/Information Quality
  2. Active Metrics
  3. Insights-Driven Governance
  4. Federated Environments



# Deep Dive into Data Import Options

# Thank You !



## ... Questions?