



The Future of Cultural and Natural Heritage Data Management

Marco Neumann
KONA
New York

CIDOC Conceptual Reference Model (CRM)



<http://cidoc.ics.forth.gr/>

semuse

<http://semuse.org/>

SeMuSe Members

Mark Baltzegar
The Cyc Foundation, Austin, Texas, USA

Prof Jonathan Bowen
Museophile Limited, UK

Kendall Clark
Clark & Parsia, Washington, USA

Richard Cyganiak
DERI, Ireland

Ryan Donaldson
CollectiveAccess, New York, USA

Heather Dunn
Heritage Information Analyst, Standards
Canadian Heritage Information Network

Prof Reinhard Foertsch
University of Cologne, Germany

Prof Guenther Goerz
University of Erlangen-Nuremberg, Computer Science Department,
Germany

Georg Hohmann
Germanisches Nationalmuseum, Germany

Graham Klyne
Image Bioinformatics Research Group, Department of Zoology,
University of Oxford

Robert Kummer
University of Cologne, Germany

Richard Light
Museum Information Consultant, U.K.

Paul Miller
Founder, The Cloud of Data, U.K.

Marco Neumann
KONA, New York, USA

Joseph Padfield
National Gallery, London

Bernhard Schiemann
University of Erlangen-Nuremberg, Germany

Koven Smith
Metropolitan Museum of Art, New York, USA

Thomas Tunsch
Staatliche Museen zu Berlin, Germany

Don Undeen
Metropolitan Museum of Art, New York, USA

Richard Urban
University of Illinois, Champaign, USA

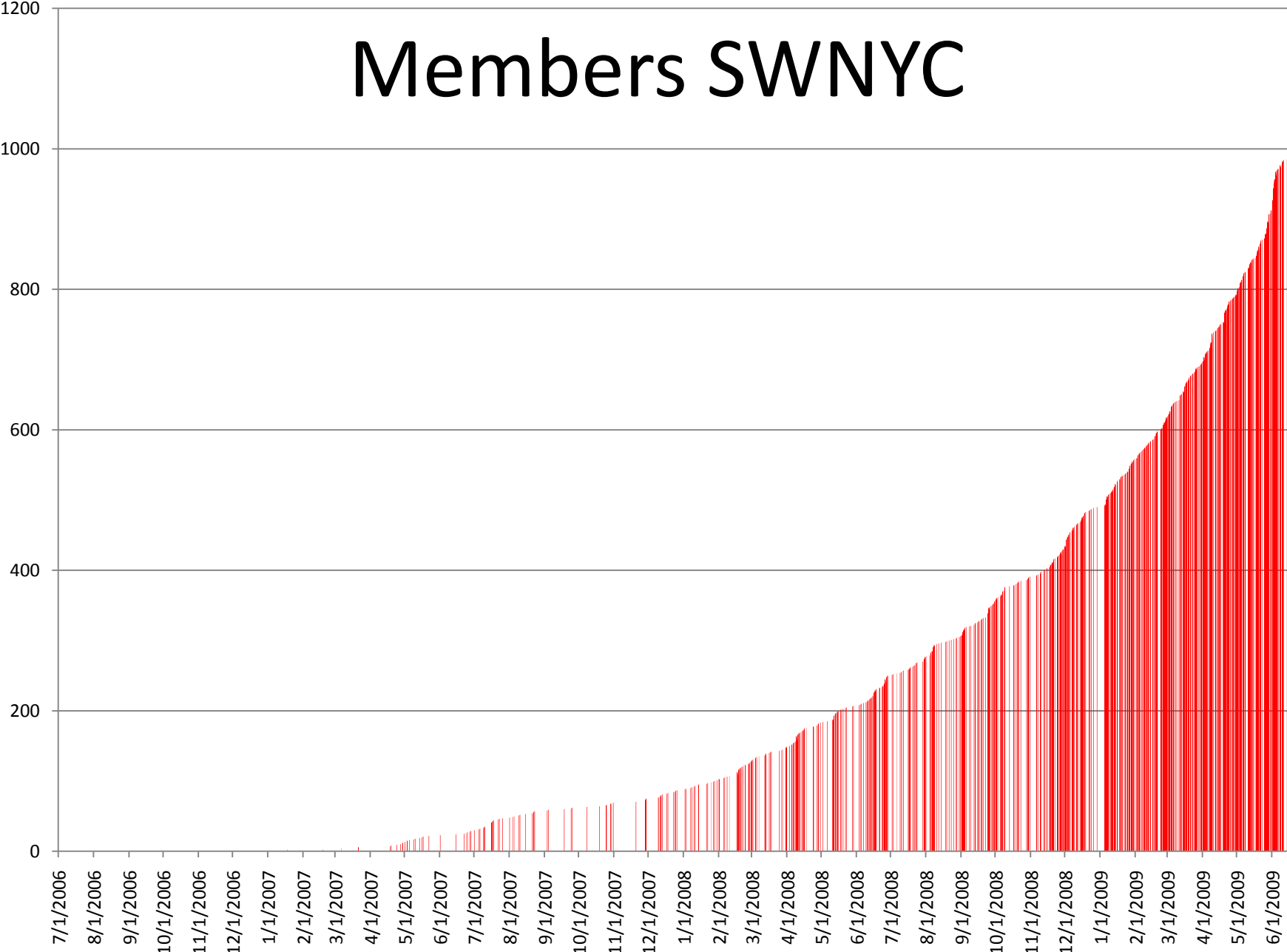


semantic universe

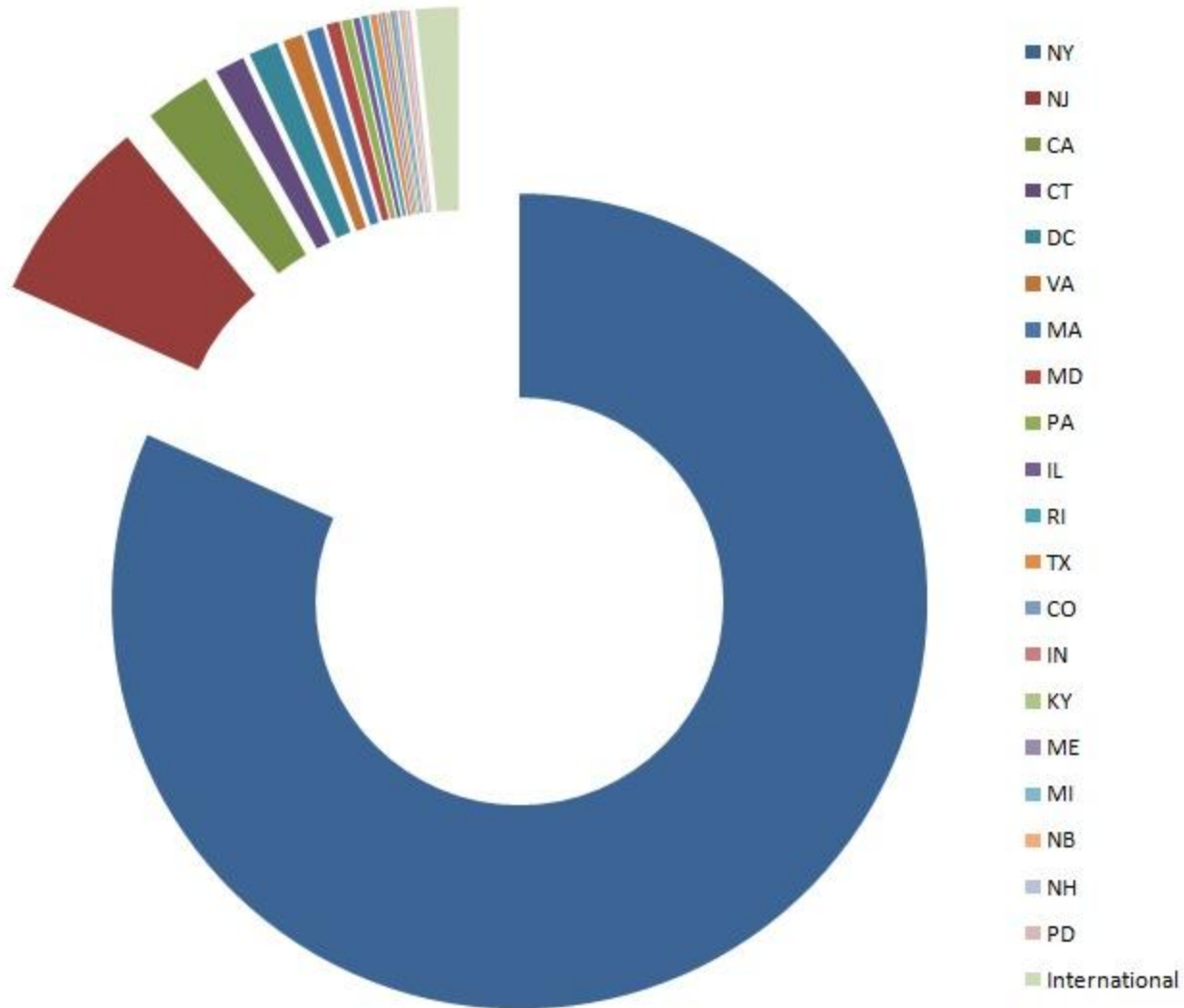


2009 Semantic Technology Conference
JUNE 14-18 SAN JOSE, CALIFORNIA

Members SWNYC



Membership composition





Find
a Meetup Group

Start
a Meetup Group

Meetup Groups

Your City

Message Boards

Ads by Google

[Semantic Data Integration](#)

Semantically Search and Collaborate Documents, Data, Web in one App
[www.alitora.com](#)

[Website Redesign Experts](#)

Your website could be generating more leads and sales. Learn how.
[www.3mediaweb.com](#)

[Breakthrough All-SQL Tool](#)

Taxonomies, ontologies, faceted classifications, semantic networks.
[www.ParkStreetSolutions.com](#)

Semantic Web Meetup Groups

Meet other local people interested in the Semantic Web, an initiative to bring machine understanding to create "one giant database" of the web.



Put this map on your website. Timeline animation

Semantic Web Meetup Group Interested in a new Semantic Web Meetup Group

Related topics

- [XML](#), [Knowledge Management](#), [Information Science](#), [Web Standards](#), [Artificial Intelligence](#), [CSS](#), [Web Communications](#), [Information Architecture](#), [Web Content Management Systems](#), [JavaScript](#)

Find a Semantic Web Meetup Group near you

Country
USA

ZIP code
10010

Or, browse all cities

Largest Meetup Groups

Put this list on your website

1

The New York Semantic Web Meetup Group

Meet local people interested in the Semantic Web, an initiative by the W3C [http://www.w3c.org] to make the web "one giant database": The Data Web. We address technologies such as RDF, RDFS, OWL and applications that help to develop or that use onto...

989
Semantic Web
Meetup
members

Meetup topics:

The New York Semantic Web Meetup Group
New York, NY, US; 989 members

Silicon Valley Semantic Technology (SVST) Group
Palo Alto, CA US; 566 members

The Washington Semantic Web Meetup
Fairfax, VA, US; 337 members

The San Francisco Semantic Web Meetup
San Francisco, CA, US; 260 members

Boulder Creative Commons
Boulder, CO, US; 246 members

Toronto Wiki Tuesdays
Toronto, ON, CA; 181 members

NY CSS Meetup
New York, NY, US; 179 members

The digitalOttawa Meetup Group
Ottawa, ON, CA; 171 members

The Cambridge Semantic Web Meetup Group
Cambridge, MA, US; 169 members

The Los Angeles Semantic Web Meetup
Los Angeles, CA, US; 150 members

DDD-NYC
New York, NY, US; 134 members

The Berlin Semantic Web Meetup Group

The Vancouver Semantic Web Meetup Group
Vancouver, BC, CA; 77 members

Semantically Webbed Seattle Meetup Group
Seattle, WA, US; 64 members

London Semantic Web Meetup Group
London, United Kingdom, GB; 50 members

The New York Glue Meetup
New York, NY, US; 50 members

Manila Web Design
Manila, Philippines, PH; 36 members

Boulder Semantic Web Meetup
Boulder, CO, US; 32 members

Semantic Web Dallas
Richardson, TX, US; 30 members

The Oslo Semantic Web Meetup
Oslo, Norway, NO; 26 members

The Ottawa Web Analytics Group
Ottawa, ON, CA; 24 members

Linked Data Meetup
Burlington, MA, US; 20 members

Vienna Semantic Web Meetup
Vienna, Austria, AT; 17 members

The Philadelphia Semantic Web Meetup
Philadelphia, PA, US; 14 members



Find
a Meetup Group

Start
a Meetup Group

Meetup Groups

Your City

Message Boards

Ads by Google

[Semantic Data Integration](#)

Semantically Search and Collaborate Documents, Data, Web in one App
[www.alitora.com](#)

[Website Redesign Experts](#)

Your website could be generating more leads and sales. Learn how.
[www.3mediaweb.com](#)

[Breakthrough All-SQL Tool](#)

Taxonomies, ontologies, faceted classifications, semantic networks.
[www.ParkStreetSolutions.com](#)

Semantic Web Meetup Groups

Meet other local people interested in the Semantic Web, an initiative to bring machine understanding to create "one giant database" of the web.

Semantic Web Meetups around the world



Groups	Members	Interested	Cities
31	4,272	2,119	24

[Put this map on your website.](#) [Timeline and...](#)

- Semantic Web Meetup Group
- Interested in a new Semantic Web Meetup

Related topics

[XML](#), [Knowledge Management](#), [Information Standards](#), [Artificial Intelligence](#), [CSS](#), [Web Content Architecture](#), [Web Content Management](#)

Largest Meetup Groups

[Put this list on your website](#)

1 The New York Semantic Web

Meet local people interested in the Semantic Web, an initiative by the W3C [<http://www.w3.org>] to bring machine understanding to the web "one giant database"; address technologies such as RDF and SPARQL, and applications that help to develop on the Semantic Web.

Meetup topics:

Find a Semantic Web Meetup Group near you

Country
USA

ZIP code
10010

[Or, browse all cities](#)



Mozilla Firefox

File Edit View History Delicious Bookmarks Tools Help

http://www.swync.org/sparql/?id=455214

Most Visited Getting Started Latest Headlines

Disable Cookies CSS Forms Images Information Miscellaneous Outline Resize Tools View Source Options

This XML file does not appear to have any style information associated with it. The document tree is shown below.

```
- <rdf:RDF>
- <rdf:Description rdf:about="http://www.swync.org/sparql/#">
  - <dc:title>
    Members of the Meetup [XML age: 1245337140 RDF age: 1245337140 ]
  </dc:title>
  <meetup:member_count>566</meetup:member_count>
</rdf:Description>
- <foaf:Person rdf:about="http://www.meetup.com/members/542005/">
  <foaf:name>Abbey Sparrow</foaf:name>
  <foaf:member>455214</foaf:member>
  <foaf:img rdf:resource="http://photos1.meetupstatic.com/photos/member/1/0/b/b/member_4450283.jpeg"/>
  <foaf:city>Redwood City</foaf:city>
  <foaf:state>CA</foaf:state>
  <foaf:zip>94063</foaf:zip>
  <rdfs:label>Abbey Sparrow</rdfs:label>
  <foaf:country>us</foaf:country>
  <geo:lat>37.4900016784668</geo:lat>
  <geo:long>-122.19999694824219</geo:long>
  <meetup:joined rdf:datatype="http://www.w3.org/2001/XMLSchema#dateTime">2008-07-09T00:22:22-05:00</meetup:joined>
  <dc:date rdf:datatype="http://www.w3.org/2001/XMLSchema#dateTime">2008-07-09T00:22:22-05:00</dc:date>
  <meetup:visited rdf:datatype="http://www.w3.org/2001/XMLSchema#dateTime">2008-07-09T16:50:40-05:00</meetup:visited>
</foaf:Person>
- <foaf:Person rdf:about="http://www.meetup.com/members/2905138/">
  <foaf:name>Abhay Kumar</foaf:name>
  <foaf:member>455214</foaf:member>
  <foaf:img rdf:resource="http://photos1.meetupstatic.com/photos/member/e/6/5/member_2637685.jpeg"/>
  <foaf:city>San Francisco</foaf:city>
  <foaf:state>CA</foaf:state>
  <foaf:zip>94105</foaf:zip>
  <rdfs:label>Abhay Kumar</rdfs:label>
  <foaf:country>us</foaf:country>
  <geo:lat>37.790000915527344</geo:lat>
  <geo:long>-122.4000015258789</geo:long>
  <meetup:joined rdf:datatype="http://www.w3.org/2001/XMLSchema#dateTime">2009-04-01T14:40:54-05:00</meetup:joined>
  <dc:date rdf:datatype="http://www.w3.org/2001/XMLSchema#dateTime">2009-04-01T14:40:54-05:00</dc:date>
  <meetup:visited rdf:datatype="http://www.w3.org/2001/XMLSchema#dateTime">2009-04-01T14:40:54-05:00</meetup:visited>
```

Done

TopBraid - meetup/tbcmeetup.n3 - Eclipse Platform

File Edit Navigate Project Model Inference Scripts Resource Window Help

<http://www.meetup.com/members/1189869>

Synchronize Classes

tbcmeetup.n3

Resource Form

Name: <http://www.meetup.com/members/1189869/> Ok

Annotations

rdfs:label dan

Other Properties

rdf:type foaf:Person

Incoming References

foaf:img

Properties

- owl:sameAs
- owl:versionInfo
- rdfs:comment
- rdfs:label
- rdfs:seeAlso

Form Graph Source Code

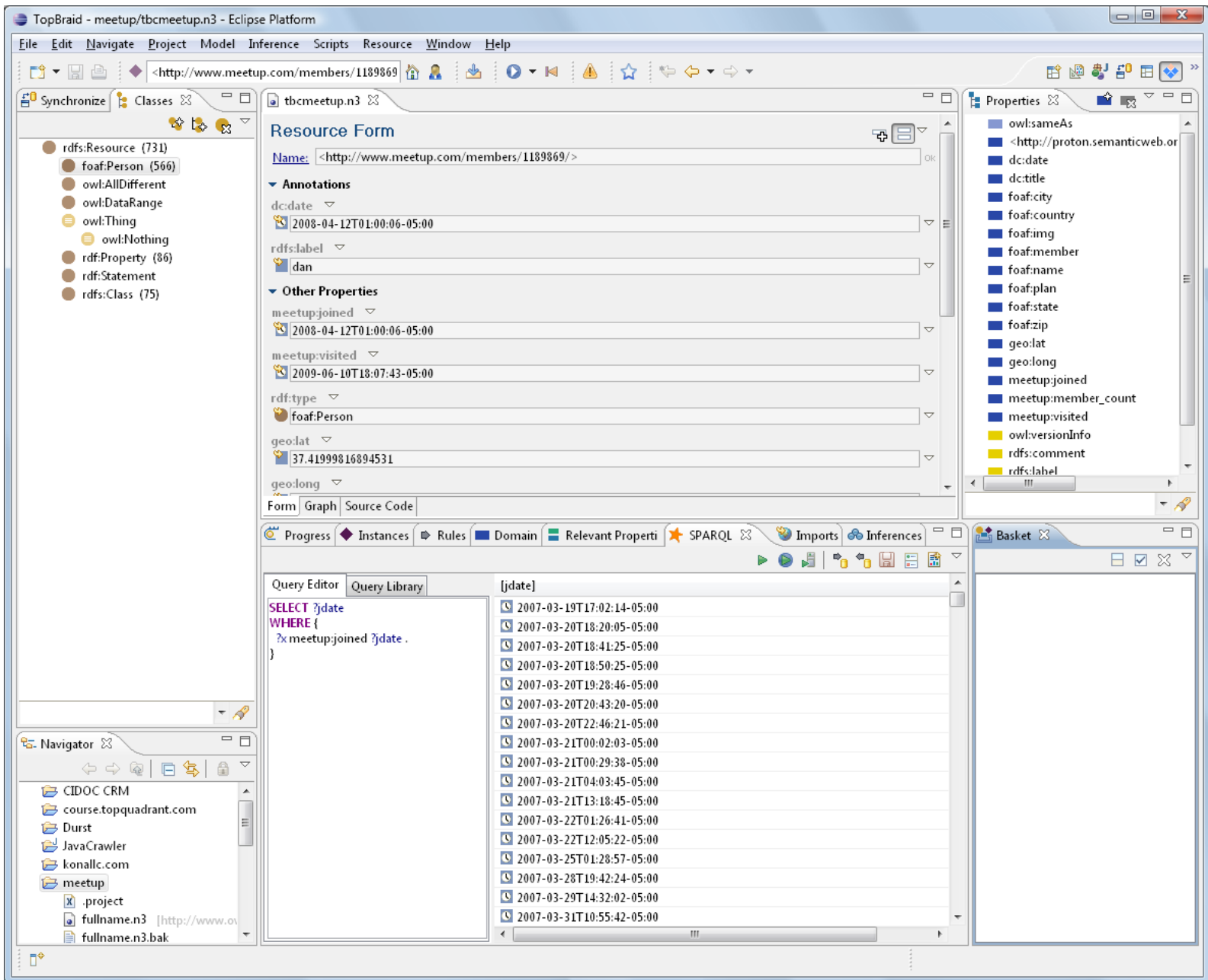
Progress Instances Rules Domain Relevant Properties SPARQL Imports

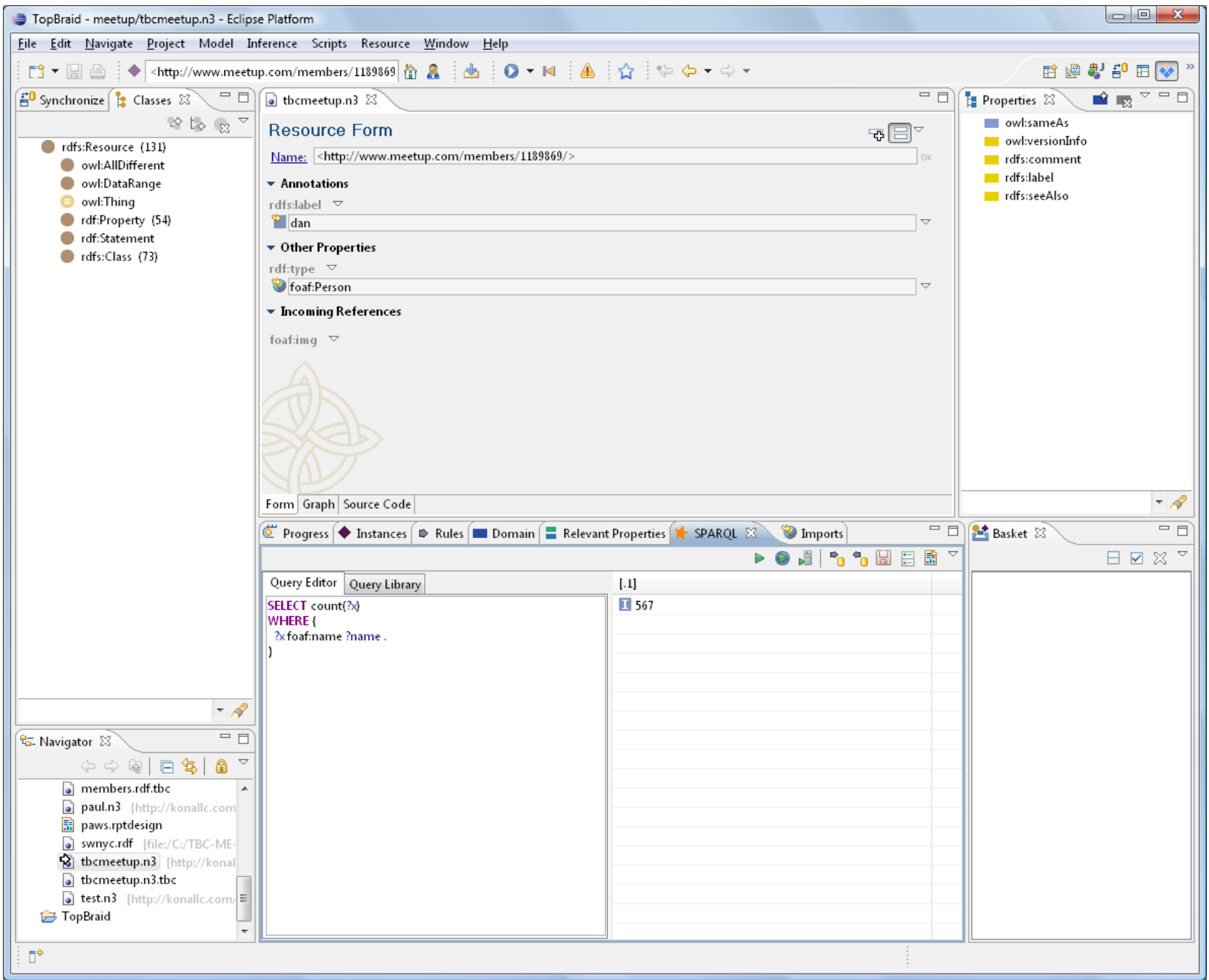
http://www.swinc.org/sparql/?id=455214

Basket

Navigator

- members.rdf.tbc
- paul.n3 [http://konallc.com]
- paws.rptdesign
- swinc.rdf [file://C:/TBC-ME-]
- tbcmeetup.n3 [http://konallc.com]
- tbcmeetup.n3.tbc
- test.n3 [http://konallc.com]
- TopBraid





Next Steps: Meetup Ontology

- OWL Ontology
- To map between different social platforms
- Provide platform for Location, Time, Community, concepts and events:

LoTiCo